

Kreatech™ FISH probes

Product Information Sheet

KI-10741

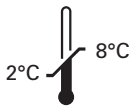
TFE3 (Xp11) Break

100 µl

DANGER



FORMAMIDE



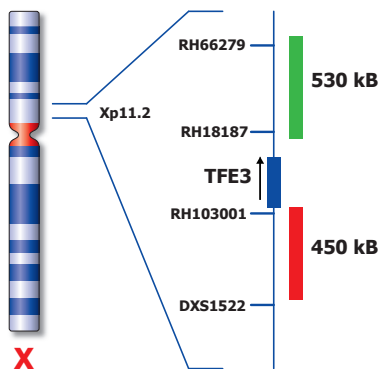
Kreatech Biotechnology B.V.
Vlierweg 20
1032 LG Amsterdam
The Netherlands
www.LeicaBiosystems.com

RUO - Research Use Only

Not for use in diagnostic procedures

PI-KI-10741_D2.1

Published Sept 2015



Not to scale

KI-10741

Kreatech™ TFE3 (Xp11) Break FISH probe

Introduction: The **TFE3 (Xp11) Break** FISH probe has been optimized to detect translocations involving the TFE3 gene region at Xp11.2 in a dual-color, split assay.

Critical region 1 (red): The **proximal TFE3** gene region probe is direct-labeled with PlatinumBright™550.
Critical region 2 (green): The **distal TFE3** gene region probe is direct-labeled with PlatinumBright™495.

Reagent: Kreatech probes are direct-labeled DNA probes provided in a ready-to-use format. Apply 10 µl of probe to a sample area of approximately 22 x 22 mm.

Please refer to the Instructions for Use for the entire Kreatech FISH protocol.

Kreatech FISH probes are REPEAT-FREE™ and therefore do not contain Cot-1 DNA. Hybridization efficiency is increased and background, due to unspecific binding, is highly reduced.

Patterns: The **TFE3 (Xp11) Break** FISH probe is designed as a dual-color split probe to detect translocations at Xp11. A break is defined as a split of a red/green or yellow fusion signal (F) into separate red and green signals. Only red and green signals which are more than one single diameter apart from each other are counted as a break. Co-localized red/green or yellow signals identify the normal chromosome(s) X.

	Normal Signal Pattern	Xp11 Split
Expected Signals	2F	1F1R1G

Warning and precautions: In case of emergencies check SDS sheets for medical advice. SDS sheets may be obtained by either contacting Leica Technical Support or visiting www.LeicaBiosystems.com. DNA probes contain formamide which is a teratogen; do not inhale or allow skin contact. Wear gloves and a lab coat when handling DNA probes. All materials should be disposed of according to your institution's guidelines for hospital waste disposal.

Reagent Storage and Handling: Store at 2-8 °C. Reagents should not be used after the expiration date on the vial label.

TECHNICAL SUPPORT Technical support is available at www.LeicaBiosystems.com/service-support/technical-support/ or toll free at 800-248-0123 or via e-mail: kreatech-support@leicabiosystems.com.

CUSTOMER SERVICE Kreatech probes may be ordered through Leica Customer Service toll free at 800-248-0123 or order via e-mail: purchase.orders@leica-microsystems.com.