

# Kreatech™ FISH probes

## Product Information Sheet

KI-10756

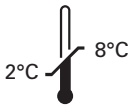
FGFR4 (5q35) / 5q11.2

100 µl

**DANGER**



**FORMAMIDE**



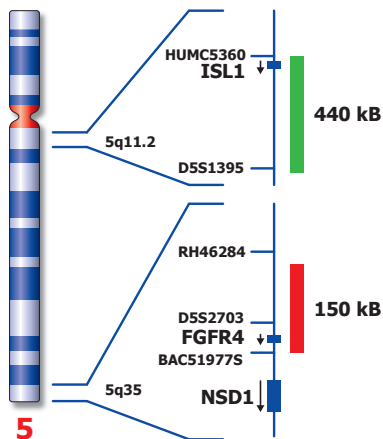
**Kreatech Biotechnology B.V.**  
Vlietweg 20  
1032 LG Amsterdam  
The Netherlands  
[www.LeicaBiosystems.com](http://www.LeicaBiosystems.com)

**RUO - Research Use Only**

Not for use in diagnostic procedures

PI-KI-10756\_D2.1

Published Sept 2015



Not to scale

KI-10756

## Kreatech™ FGFR4 (5q35) / 5q11.2 FISH probe

**Introduction:** The **FGFR4 (5q35) / 5q11.2** FISH probe is optimized to detect amplification involving the FGFR4 gene region at 5q35 in a dual-color assay on paraffin embedded tissue sections. The FGFR4 (5q35) specific FISH probe is optimized to detect copy numbers of the FGFR4 gene region at region 5q35. The 5q11.2 FISH probe is included to facilitate chromosome identification.

**Critical region 1 (red):** The **FGFR4 (5q35)** generegion probe is direct-labeled with PlatinumBright™550.  
**Control region (green):** The **5q11.2** FISH probe is direct-labeled with PlatinumBright™495.

**Reagent:** Kreatech probes are direct-labeled DNA probes provided in a ready-to-use format. Apply 10 µl of probe to a sample area of approximately 22 x 22 mm.

**Please refer to the Instructions for Use for the entire Kreatech FISH protocol.**

**Kreatech FISH probes are REPEAT-FREE™ and therefore do not contain Cot-1 DNA. Hybridization efficiency is increased and background, due to unspecific binding, is highly reduced.**

**Interpretation:** The **FGFR4 (5q35) / 5q11.2** FISH probe is designed as a dual-color assay to detect amplification at 5q35. Amplification involving the FGFR4 gene region at 5q35 will show several red signals, while the control at 5q11.2 will provide 2 green signals (3+R2G). Two single color red and green signals will identify the normal chromosomes 5 (2R2G).

	Normal Signal Pattern	5q35 Amplification
Expected Signals	2R2G	3+R2G

**Warning and precautions:** In case of emergencies check SDS sheets for medical advice. SDS sheets may be obtained by either contacting Leica Technical Support or visiting [www.LeicaBiosystems.com](http://www.LeicaBiosystems.com). DNA probes contain formamide which is a teratogen; do not inhale or allow skin contact. Wear gloves and a lab coat when handling DNA probes. All materials should be disposed of according to your institution's guidelines for hospital waste disposal.

**Reagent Storage and Handling:** Store at 2-8 °C. Reagents should not be used after the expiration date on the vial label.

**TECHNICAL SUPPORT** Technical support is available at [www.LeicaBiosystems.com/service-support/technical-support/](http://www.LeicaBiosystems.com/service-support/technical-support/) or toll free at 800-248-0123 or via e-mail: [kreatech-support@leicabiosystems.com](mailto:kreatech-support@leicabiosystems.com).

**CUSTOMER SERVICE** Kreatech probes may be ordered through Leica Customer Service toll free at 800-248-0123 or order via e-mail: [purchase.orders@leica-microsystems.com](mailto:purchase.orders@leica-microsystems.com).