

Kreatech™ FISH probes

Product Information Sheet

KI-10209

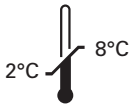
5q- (5q31; 5q33)

100 µl

DANGER



FORMAMIDE



Kreatech Biotechnology B.V.

Vlierweg 20

1032 LG Amsterdam

The Netherlands

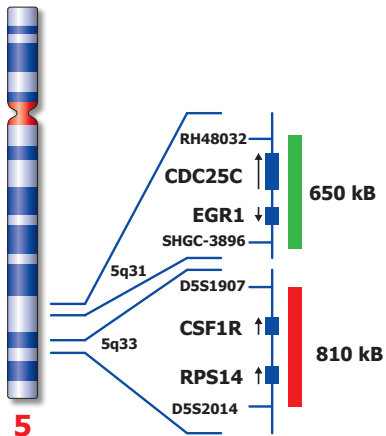
www.LeicaBiosystems.com

RUO - Research Use Only

Not for use in diagnostic procedures

Published in March 2020

PI-KI-10209_D3.0



Not to scale

Kreatech™ 5q- (5q31; 5q33) FISH probe

Introduction: The **5q-** specific FISH probe is optimized to detect the CDC25C/EGR1 gene region at 5q31 and the CSF1R/RPS14 gene region at 5q33 simultaneously in a dual-color assay.

Critical region 1 (red): The **5q33 (CSF1R/RPS14)** specific FISH probe is direct-labeled with PlatinumBright™550.
Critical region 2 (green): The **5q31 (CDC25C/EGR1)** specific FISH probe is direct-labeled with PlatinumBright™495.

Reagent: Kreatech probes are direct-labeled DNA probes provided in a ready-to-use format. Apply 10 µl of probe to a sample area of approximately 22 x 22 mm.

Please refer to the Instructions for Use for the entire Kreatech FISH protocol.

Kreatech FISH probes are REPEAT-FREE™ and therefore do not contain Cot-1 DNA. Hybridization efficiency is increased and background, due to unspecific binding, is highly reduced.

Patterns: The **5q- (5q31; 5q33)** FISH probe is designed as a dual-color assay to detect deletions at 5q31 and 5q33. Deletions involving both critical regions at 5q31 and 5q33 will show one red and one green signal (1R1G). Single deletions of 5q33 will show one red signal and two green signals (1R2G). Single deletions of 5q31 will show 1 green signal and two red (2R1G). Two single color red and green signals will identify the normal chromosomes 5 (2R2G).

	Normal Signal Pattern	Del(5q31)(5q33)	Del(5q33)	Del(5q31)
Expected Signals	2R2G	1R1G	1R2G	2R1G

References: Boultonwood J et al, Blood 2002; 99: 4638-4641
 Zhao N et al, PNAS 1997; 94: 6948-6953
 Wang et al, Haematologica 2008; 93: 994-1000
 Ebert BL et al, Nature 2008; 451: 335-339
 Mohamedali A and Mufti GJ, Brit J Haematol 2008; 144: 157-168

Warning and precautions: In case of emergencies check SDS sheets for medical advice. SDS sheets may be obtained by either contacting Leica Technical Support or visiting www.LeicaBiosystems.com. DNA probes contain formamide which is a teratogen; do not inhale or allow skin contact. Wear gloves and a lab coat when handling DNA probes. All materials should be disposed of according to your institution's guidelines for hospital waste disposal.

Reagent Storage and Handling: Store at 2-8 °C. Reagents should not be used after the expiration date on the vial label.

TECHNICAL SUPPORT Technical support is available at www.LeicaBiosystems.com/service-support/technical-support/ or toll free at 800-248-0123 or via e-mail: kreatech-support@leicabiosystems.com.

CUSTOMER SERVICE Kreatech probes may be ordered through Leica Customer Service toll free at 800-248-0123 or order via e-mail: purchase.orders@leica-microsystems.com.