

# Kreatech™ FISH probes

## Product Information Sheet

KI-10104

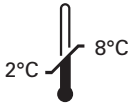
GLI1 (12q13) / SE 12

100 µl

**DANGER**



**FORMAMIDE**



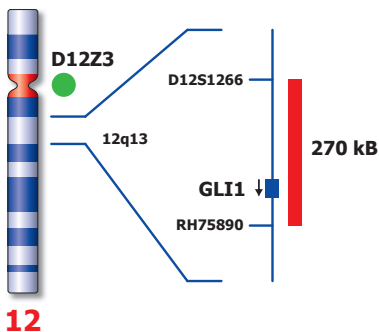
**Kreatech Biotechnology B.V.**  
Vlierweg 20  
1032 LG Amsterdam  
The Netherlands  
[www.LeicaBiosystems.com](http://www.LeicaBiosystems.com)

**RUO - Research Use Only**

Not for use in diagnostic procedures

PI-KI-10104\_D2.1

Published August 2015



Not to scale

KI-10104

## Kreatech™ GLI1 (12q13) / SE 12 FISH probe

**Introduction:** The **GLI1 (12q13)** specific FISH probe is optimized to detect the GLI1 gene region at region 12q13. The **Satellite Enumeration (SE) 12** FISH probe is included to facilitate chromosome identification.

**Critical region (red):** The **GLI1 (12q13)** specific FISH probe is direct-labeled with PlatinumBright™550.  
**Control region (green):** The **SE 12** specific FISH probe is direct-labeled with PlatinumBright™495.

**Reagent:** Kreatech probes are direct-labeled DNA probes provided in a ready-to-use format. Apply 10 µl of probe to a sample area of approximately 22 x 22 mm.

**Please refer to the Instructions for Use for the entire Kreatech FISH protocol.**

**Kreatech FISH probes are REPEAT-FREE™ and therefore do not contain Cot-1 DNA. Hybridization efficiency is increased and background, due to unspecific binding, is highly reduced.**

**Patterns:** The **GLI1 (12q13) / SE 12** FISH probe is designed as a dual-color assay to detect amplification at 12q13. Amplifications involving the GLI1 gene region at 12q13 will show three or more red signals, while the control at the chromosome 12 centromere will provide 2 signals (3R2G) or 3 signals in case of a Trisomy 12 (3R3G). Two single color red (R) and green (G) signals will identify the normal chromosomes 12 (2R2G).

	Normal Signal Pattern	Amp(12q13)	Amp (12)
Expected Signals	2R2G	3+R2G	3R3G

**References:** Elkahloun A et al, 1996, Genes Chromosomes Cancer, 17; 205-214  
Dierlamm J et al, 1998, Genes Chromosomes Cancer, 20; 155-166  
Döhner H et al, 1999, J. Molec. Med., 77; 266-281

**Warning and precautions:** In case of emergencies check SDS sheets for medical advice. SDS sheets may be obtained by either contacting Leica Technical Support or visiting [www.LeicaBiosystems.com](http://www.LeicaBiosystems.com). DNA probes contain formamide which is a teratogen; do not inhale or allow skin contact. Wear gloves and a lab coat when handling DNA probes. All materials should be disposed of according to your institution's guidelines for hospital waste disposal.

**Reagent Storage and Handling:** Store at 2-8 °C. Reagents should not be used after the expiration date on the vial label.

**TECHNICAL SUPPORT** Technical support is available at [www.LeicaBiosystems.com/service-support/technical-support/](http://www.LeicaBiosystems.com/service-support/technical-support/) or toll free at 800-248-0123 or via e-mail: [kreatech-support@leicabiosystems.com](mailto:kreatech-support@leicabiosystems.com).

**CUSTOMER SERVICE** Kreatech probes may be ordered through Leica Customer Service toll free at 800-248-0123 or order via e-mail: [purchase.orders@leica-microsystems.com](mailto:purchase.orders@leica-microsystems.com).