

## Kreatech™ FISH probes Product Information Sheet

14Q004V550

IGH (14q32) Proximal - XL

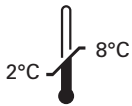
Red

1 ml

**DANGER**



**FORMAMIDE**



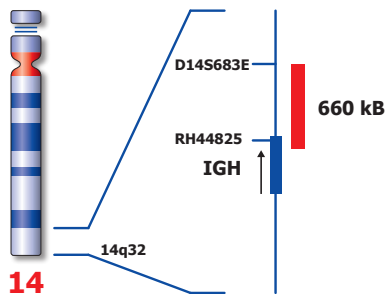
**Kreatech Biotechnology B.V.**  
Vlierweg 20  
1032 LG Amsterdam  
The Netherlands  
[www.LeicaBiosystems.com](http://www.LeicaBiosystems.com)

### Analyte Specific Reagent

Analytical and performance characteristics are not established

PI-14Q004V550\_D1.2

Published October 2016



Not to scale

14Q004V550

## Kreatech™ IGH (14q32) Proximal - XL FISH probe

**Intended use:** Intended for use in a diagnostic application for identification and quantification of an individual chemical substance or ligand in biological specimens.

**Introduction:** The IGH (14q32) Proximal - XL FISH probe is optimized to detect the genomic regions proximal to the IGH breakpoint(s) at 14q32.

**Critical region (red):** The IGH (14q32) Proximal - XL FISH probe is direct-labeled with PlatinumBright™550.

**Reagent:** The IGH (14q32) Proximal - XL FISH probe is a direct-labeled DNA probe provided at 10 times the concentration than the amount of DNA probe used in the QC test procedure.

**Kreatech FISH probes are REPEAT-FREE™ and therefore do not contain Cot-1 DNA Hybridization efficiency is increased and background, due to unspecific binding, is highly reduced.**

**Patterns:** Two red (2R) signals will identify the non-aberrant IGH loci.

	Signal Pattern
Expected Signals	2R

**Warning and precautions:** In case of emergencies check SDS sheets for medical advice. SDS sheets may be obtained by either contacting Leica Technical Support or visiting [www.LeicaBiosystems.com](http://www.LeicaBiosystems.com). DNA probes contain formamide which is a teratogen; do not inhale or allow skin contact. Wear gloves and a lab coat when handling DNA probes. All materials should be disposed of according to your institution's guidelines for hospital waste disposal.

**Reagent Storage and Handling:** Store at 2-8 °C. Reagents should not be used after the expiration date on the vial label.

**TECHNICAL SUPPORT** Technical support is available at [www.LeicaBiosystems.com/service-support/technical-support/](http://www.LeicaBiosystems.com/service-support/technical-support/) or toll free at 800-248-0123 or via e-mail: [kreatech-support@leicabiosystems.com](mailto:kreatech-support@leicabiosystems.com).

**CUSTOMER SERVICE** Kreatech probes may be ordered through Leica Customer Service toll free at 800-248-0123 or order via e-mail: [purchase.orders@leica-microsystems.com](mailto:purchase.orders@leica-microsystems.com).



Manufactured by  
Kreatech Biotechnology B.V.  
An entity of Leica Biosystems