

## Kreatech™ FISH probes Product Information Sheet

11Q003I495

KMT2A (11q23) Proximal

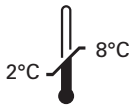
Green

250 µl

**DANGER**



**FORMAMIDE**



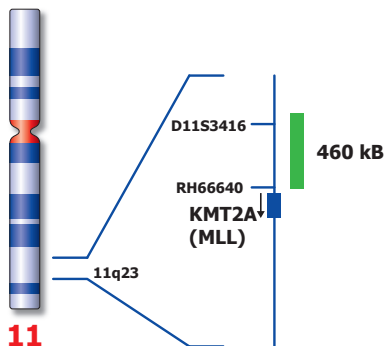
**Kreatech Biotechnology B.V.**  
Vlierweg 20  
1032 LG Amsterdam  
The Netherlands  
[www.LeicaBiosystems.com](http://www.LeicaBiosystems.com)

### Analyte Specific Reagent

Analytical and performance characteristics are not established

PI-11Q003I495\_D2.1

Published August 2015



Not to scale

11Q003I495

## Kreatech™ KMT2A (11q23) Proximal FISH probe

**Introduction:** The **KMT2A (11q23) Proximal** FISH probe is optimized to detect the genomic region proximal to the KMT2A breakpoint(s) at 11q23.

**Critical region (green):** The **KMT2A (11q23) Proximal** FISH probe is direct-labeled with PlatinumBright™ 495.

**Reagent:** The **KMT2A (11q23) Proximal** FISH probe is a direct-labeled DNA probe provided at two times the concentration than the amount of DNA probe used in the QC test procedure.

**Kreatech FISH probes are REPEAT-FREE™ and therefore do not contain Cot-1 DNA. Hybridization efficiency is increased and background, due to unspecific binding, is highly reduced.**

**Patterns:** Two green (2G) signals will identify the non-aberrant KMT2A loci.

	Signal Pattern
Expected Signals	2G

**Warning and precautions:** In case of emergencies check SDS sheets for medical advice. SDS sheets may be obtained by either contacting Leica Technical Support or visiting [www.LeicaBiosystems.com](http://www.LeicaBiosystems.com). DNA probes contain formamide which is a teratogen; do not inhale or allow skin contact. Wear gloves and a lab coat when handling DNA probes. All materials should be disposed of according to your institution's guidelines for hospital waste disposal.

**Reagent Storage and Handling:** Store at 2-8 °C. Reagents should not be used after the expiration date on the vial label.

**TECHNICAL SUPPORT** Technical support is available at [www.LeicaBiosystems.com/service-support/technical-support/](http://www.LeicaBiosystems.com/service-support/technical-support/) or toll free at 800-248-0123 or via e-mail: [kreatech-support@leicabiosystems.com](mailto:kreatech-support@leicabiosystems.com).

**CUSTOMER SERVICE** Kreatech probes may be ordered through Leica Customer Service toll free at 800-248-0123 or order via e-mail: [purchase.orders@leica-microsystems.com](mailto:purchase.orders@leica-microsystems.com).