

Kreatech™ FISH probes Product Information Sheet

06Q007V550

ROS1 (6q22) Distal - XL

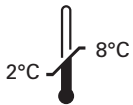
Red

1 ml

DANGER



FORMAMIDE



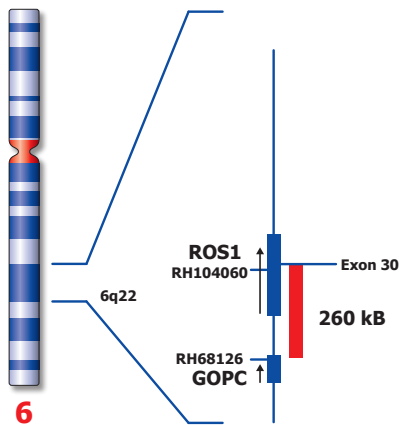
Kreatech Biotechnology B.V.
Vlierweg 20
1032 LG Amsterdam
The Netherlands
www.LeicaBiosystems.com

Analyte Specific Reagent

Analytical and performance characteristics are not established

PI-06Q007V550_D1.2

Published October 2016



Not to scale

06Q007V550

Kreatech™ ROS1 (6q22) Distal - XL FISH probe

Intended use: Intended for use in a diagnostic application for identification and quantification of an individual chemical substance or ligand in biological specimens.

Introduction: The **ROS1 (6q22) Distal - XL** FISH probe is optimized to detect the genomic region distal to the ROS1 breakpoint(s) at 6q22.

Critical region (red): The **ROS1 (6q22) Distal - XL** FISH probe is direct-labeled with PlatinumBright™550.

Reagent: The **ROS1 (6q22) Distal - XL** FISH probe is a direct-labeled DNA probe provided at 10 times the concentration than the amount of DNA probe used in the QC test procedure.

Kreatech FISH probes are REPEAT-FREE™ and therefore do not contain Cot-1 DNA Hybridization efficiency is increased and background, due to unspecific binding, is highly reduced.

Patterns: Two red (2R) signals will identify the non-aberrant ROS1 loci.

	Signal Pattern
Expected Signals	2R

Warning and precautions: In case of emergencies check SDS sheets for medical advice. SDS sheets may be obtained by either contacting Leica Technical Support or visiting www.LeicaBiosystems.com. DNA probes contain formamide which is a teratogen; do not inhale or allow skin contact. Wear gloves and a lab coat when handling DNA probes. All materials should be disposed of according to your institution's guidelines for hospital waste disposal.

Reagent Storage and Handling: Store at 2-8 °C. Reagents should not be used after the expiration date on the vial label.

TECHNICAL SUPPORT Technical support is available at www.LeicaBiosystems.com/service-support/technical-support/ or toll free at 800-248-0123 or via e-mail: kreatech-support@leicabiosystems.com.

CUSTOMER SERVICE Kreatech probes may be ordered through Leica Customer Service toll free at 800-248-0123 or order via e-mail: purchase.orders@leica-microsystems.com.



Manufactured by
Kreatech Biotechnology B.V.
An entity of Leica Biosystems.