

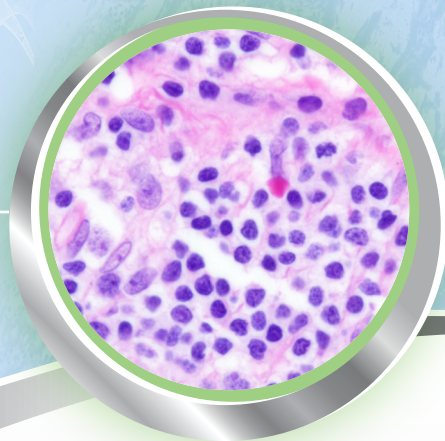
INTRODUCING THE ST INFINITY AND NEW ST INFINITY 2.0 H&E STAINING SYSTEMS

Quality You Can Count On in Every Slide

ST Infinity and the NEW ST Infinity 2.0 Delivers
Consistent Staining from Slide 1 to 2000

We now offer a full range of staining intensity with the
NEW ST Infinity 2.0 H&E Staining System, validated
specifically for the Leica ST5010 and ST5020 stainers.

Deliver confidence in diagnosis with ST Infinity portfolio
of ready-to-use H&E staining kits.



Advancing Cancer Diagnostics
Improving Lives

Leica
BIO SYSTEMS

ST INFINITY H&E STAINING SYSTEM AND ST INFINITY 2.0 H&E STAINING SYSTEMS

Reliable Results

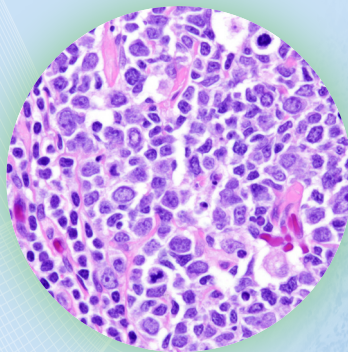
All components in the ST Infinity 2.0 system remain stable and produce high-quality results from slide 1 to 2000. Fill and replace all components together to reduce labor and eliminate the guesswork when utilizing individual H&E components.

Efficiency

The ST Infinity H&E staining systems partnered with the Leica ST 5010/ST 5020 stainers will streamline your staining workflow, while reducing touch points and waste. ST Infinity H&E staining systems provide an efficient integrated pathway to diagnostic confidence.



Select the NEW ST Infinity 2.0 H&E Staining System for moderate to dark staining intensity.



The H&E Staining Systems are ready-to-use and validated specifically for the Leica ST5010 and ST5020 stainers.



Select the ST Infinity H&E Staining System for light to moderate staining intensity.

Contact your local Leica Biosystems sales representative to learn more about ST Infinity 2.0 and ST Infinity H&E staining systems.