

Product Specifications



CP03-LBS Multiplex Panel – Human CD68/CD163/PD-L1

Description: UltraPlex chromogenic multiplex IHC kit to detect human CD68/CD163/PD-L1
Cat. No.: CP03A-010
Application: IHC-P. Multiplex chromogenic IHC tissue staining of human FFPE tissue sections.
Product Overview: Kit for multiplex chromogenic staining of 10 slides plus a single negative control slide on the BOND RX with V7.0 software.

| 1° Antibody | Clone | 1° Tag | 2° Antibody | Chromogen |
|--------------|----------|--------|----------------|------------------|
| CD68 | C68/684 | UT021 | Anti-UT021-AP | Leica Refine Red |
| CD163 | EPR19518 | UT015 | Anti-UT015-HRP | Yellow |
| PD-L1 | 73-10 | UT014 | Anti-UT014-HRP | Leica Blue |

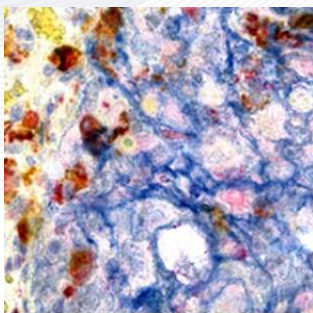
- Leica Refine Red and Leica Blue chromogens must be purchased separately from Leica Biosystems.
- Optimized for use on FFPE tissue sections.
- Suitable for conventional brightfield imagers.

Components:

| Cell IDx Cat # | Description |
|----------------|---|
| SL-038 | *Peroxidase Block 2 (Ready to Use) |
| SL-039 | Concentrated primary antibody cocktail (CD68-UT021, CD163-UT015, PD-L1-UT014) |
| SL-025 | Concentrated Cell IDx Polymer #1 (anti-UT014-HRP, anti-UT015-AP) |
| SL-026 | Concentrated Cell IDx Polymer #2 (anti-UT016-HRP) |
| SL-027 | *Cell IDx Rabbit Block (Ready to Use) |
| SL-028 | Antibody Diluent |
| SL-029 | *Cell IDx HRP arrest solution part A (Azide in MES) |
| SL-030 | *Cell IDx HRP arrest solution part B (30% H ₂ O ₂) |
| SL-035 | Yellow Chromogen |
| SL-036 | Yellow Chromogen Buffer |
| SL-037 | Purple Heamatoxylin |

Storage: 2-8°C
Shelf-Life: 12 months
Protocols: Refer to UltraPlex Chromogenic Multiplex IHC CD68, CD163, PD-L1 Staining Protocol CP03-LBS Kit for BOND RX/RXm using *Cell IDx 1-RBY on Controller 7.0
 Staining mode: Parallel multiplex; Staining: *Cell IDx 1- RBY; Preparation: BOND RX *Dewax HIER: *HIER 20 minutes with ER2

Notes:



CD68, CD163, PD-L1
LUNG ADENOCARCINOMA

Lung adenocarcinoma tissue stained on the BOND RX with UltraPlex chromogenic multiplex IHC panel CP03-LBS: CD68 (red), CD163 (yellow), PD-L1 (blue).

Disclaimer: FOR RESEARCH USE ONLY. Not For Use In Diagnostic Procedures.

www.cellidx.com

support@cellidx.com