

# Kreatech™ FISH probes

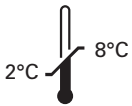
## Product Information Sheet

KI-10105  
6q21 / SE 6  
100 µl

**DANGER**



**FORMAMIDE**



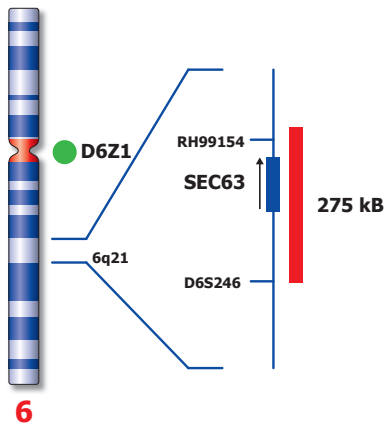
**Kreatech Biotechnology B.V.**  
Vlietweg 20  
1032 LG Amsterdam  
The Netherlands  
[www.LeicaBiosystems.com](http://www.LeicaBiosystems.com)

**RUO - Research Use Only**

Not for use in diagnostic procedures

PI-KI-10105\_D2.1

Published August 2015



Not to scale

KI-10105

## Kreatech™ 6q21 / SE 6 FISH probe

**Introduction:** The **6q21** specific FISH probe is optimized to detect 6q at region 6q21. The **Satellite Enumeration (SE) 6** FISH probe is included to facilitate chromosome identification.

**Critical region (red):** The **6q21** specific FISH probe is direct-labeled with PlatinumBright™550.  
**Control region (green):** The **SE 6** specific FISH probe is direct-labeled with PlatinumBright™495.

**Reagent:** Kreatech probes are direct-labeled DNA probes provided in a ready-to-use format. Apply 10 µl of probe to a sample area of approximately 22 x 22 mm.

**Please refer to the Instructions for Use for the entire Kreatech FISH protocol.**

**Kreatech FISH probes are REPEAT-FREE™ and therefore do not contain Cot-1 DNA. Hybridization efficiency is increased and background, due to unspecific binding, is highly reduced.**

**Patterns:** The **6q21 / SE 6** FISH probe is designed as a dual-color assay to detect deletions at 6q21 by the presence of one red signal, while the control at chromosome 6 centromere will provide 2 signals (1R2G). Two single color red (R) and green (G) signals will identify the normal chromosomes 6 (2R2G).

	Normal Signal Pattern	Del(6q21)
Expected Signals	2R2G	1R2G

**References:** Zhang, Y, 2000, Genes, Chrom. And Canc. 27; 52-58

**Warning and precautions:** In case of emergencies check SDS sheets for medical advice. SDS sheets may be obtained by either contacting Leica Technical Support or visiting [www.LeicaBiosystems.com](http://www.LeicaBiosystems.com). DNA probes contain formamide which is a teratogen; do not inhale or allow skin contact. Wear gloves and a lab coat when handling DNA probes. All materials should be disposed of according to your institution's guidelines for hospital waste disposal.

**Reagent Storage and Handling:** Store at 2-8 °C. Reagents should not be used after the expiration date on the vial label.

**TECHNICAL SUPPORT** Technical support is available at [www.LeicaBiosystems.com/service-support/technical-support/](http://www.LeicaBiosystems.com/service-support/technical-support/) or toll free at 800-248-0123 or via e-mail: [kreatech-support@leicabiosystems.com](mailto:kreatech-support@leicabiosystems.com).

**CUSTOMER SERVICE** Kreatech probes may be ordered through Leica Customer Service toll free at 800-248-0123 or order via e-mail: [purchase\\_orders@leica-microsystems.com](mailto:purchase_orders@leica-microsystems.com).