

Kreatech™ FISH probes

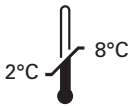
Product Information Sheet

KI-10508
15q22 / 9q34
100 µl

DANGER



FORMAMIDE



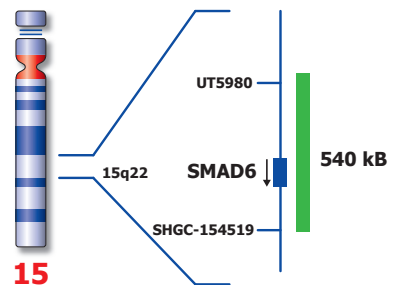
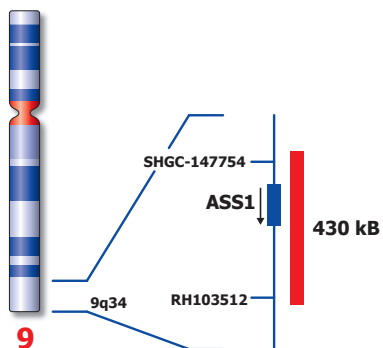
Kreatech Biotechnology B.V.
Vlieweg 20
1032 LG Amsterdam
The Netherlands
www.LeicaBiosystems.com

RUO - Research Use Only

Not for use in diagnostic procedures

PI-KI-10508_D2.1

Published Sept 2015



Not to scale

KI-10508

Kreatech™ 15q22 / 9q34 FISH probe

Introduction: The **15q22** specific FISH probe is optimized to detect 15q22. The **9q34** specific FISH region is optimized to detect 9q34.

Critical region 1 (red): The **9q34** specific FISH probe is direct-labeled with PlatinumBright™550.
Critical region 2 (green): The **15q22** specific FISH probe is direct-labeled with PlatinumBright™495.

Reagent: Kreatech probes are direct-labeled DNA probes provided in a ready-to-use format. Apply 10 µl of probe to a sample area of approximately 22 x 22 mm.

Please refer to the Instructions for Use for the entire Kreatech FISH protocol.

Kreatech FISH probes are REPEAT-FREE™ and therefore do not contain Cot-1 DNA. Hybridization efficiency is increased and background, due to unspecific binding, is highly reduced.

Patterns: The **15q22 / 9q34** FISH probe is designed as a dual-color assay to detect amplifications at 15q22 and 9q34. Amplifications involving the 9q34 region will show three or more red signals and two green signals for the 15q22 region (3+R2G). Amplifications involving the 15q22 region will show three or more green signals and two red signals for the 9q34 region (2R3+G). Amplification involving both critical regions at 9q34 and 15q22 will show three or more red and green signals (3+RG). Two single color red (R) and green (G) signals will identify the normal chromosomes 9 and 15 (2R2G).

	Normal Signal Pattern	Amp(9q34)	Amp(15q22)	Amp(9q34), Amp(15q22)
Expected Signals	2R2G	3+R2G	2R3+G	3+R3+G

References: Cremer F et al, 2005, Genes Chromosomes Cancer, 44; 194-203

Warning and precautions: In case of emergencies check SDS sheets for medical advice. SDS sheets may be obtained by either contacting Leica Technical Support or visiting www.LeicaBiosystems.com. DNA probes contain formamide which is a teratogen; do not inhale or allow skin contact. Wear gloves and a lab coat when handling DNA probes. All materials should be disposed of according to your institution's guidelines for hospital waste disposal.

Reagent Storage and Handling: Store at 2-8 °C. Reagents should not be used after the expiration date on the vial label.

TECHNICAL SUPPORT Technical support is available at www.LeicaBiosystems.com/service-support/technical-support/ or toll free at 800-248-0123 or via e-mail: kreatech-support@leicabiosystems.com.

CUSTOMER SERVICE Kreatech probes may be ordered through Leica Customer Service toll free at 800-248-0123 or order via e-mail: purchase.orders@leica-microsystems.com.