

# Kreatech™ FISH probes

## Product Information Sheet

KI-10739

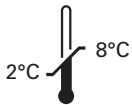
ERCC1 (19q13) / ZNF443 (19p13)

100 µl

**DANGER**



**FORMAMIDE**



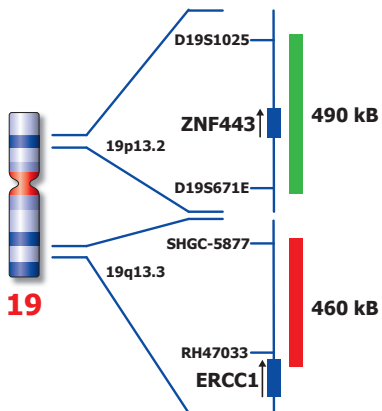
**Kreatech Biotechnology B.V.**  
Vlierweg 20  
1032 LG Amsterdam  
The Netherlands  
[www.LeicaBiosystems.com](http://www.LeicaBiosystems.com)

**RUO - Research Use Only**

Not for use in diagnostic procedures

PI-KI-10739\_D2.1

Published Oct 2015



Not to scale

KI-10739

## Kreatech™ ERCC1 (19q13) / ZNF443 (19p13) FISH probe

**Introduction:** The **ERCC1 (19q13)** specific FISH probe has been optimized to detect the ERCC1 gene region at 19q13. The **ZNF443 (19p13)** specific FISH probe is included to facilitate chromosome identification.

**Critical region 1 (red):** The **ERCC1 (19q13)** gene region probe is direct-labeled with PlatinumBright™550.  
**Control region (green):** The **ZNF443 (19p13)** FISH probe is direct-labeled with PlatinumBright™495.

**Reagent:** Kreatech probes are direct-labeled DNA probes provided in a ready-to-use format. Apply 10 µl of probe to a sample area of approximately 22 x 22 mm.

**Please refer to the Instructions for Use for the entire Kreatech FISH protocol.**

**Kreatech FISH probes are REPEAT-FREE™ and therefore do not contain Cot-1 DNA. Hybridization efficiency is increased and background, due to unspecific binding, is highly reduced.**

**Interpretation:** The **ERCC1 (19q13) / ZNF443 (19p13)** FISH probe is designed as a dual-color assay to detect amplifications or deletions at 19q13. Amplifications involving the ERCC1 gene region at 19q13 will show several red signals. Two single color red and green signals will identify the normal chromosomes 19 (2R2G).

	Normal Signal Pattern	19q13 Deletion	19q13 amplification
Expected Signals	2R2G	1R2G	3+R2G

**References:** Olausson et al, 2006, N. Engl. J. Med. 335; 983-991  
Ceppi et al, 2006, Ann. Oncol. 17; 1818-1825

**Warning and precautions:** In case of emergencies check SDS sheets for medical advice. SDS sheets may be obtained by either contacting Leica Technical Support or visiting [www.LeicaBiosystems.com](http://www.LeicaBiosystems.com). DNA probes contain formamide which is a teratogen; do not inhale or allow skin contact. Wear gloves and a lab coat when handling DNA probes. All materials should be disposed of according to your institution's guidelines for hospital waste disposal.

**Reagent Storage and Handling:** Store at 2-8 °C. Reagents should not be used after the expiration date on the vial label.

**TECHNICAL SUPPORT** Technical support is available at [www.LeicaBiosystems.com/service-support/technical-support/](http://www.LeicaBiosystems.com/service-support/technical-support/) or toll free at 800-248-0123 or via e-mail: [kreatech-support@leicabiosystems.com](mailto:kreatech-support@leicabiosystems.com).

**CUSTOMER SERVICE** Kreatech probes may be ordered through Leica Customer Service toll free at 800-248-0123 or order via e-mail: [purchase.orders@leica-microsystems.com](mailto:purchase.orders@leica-microsystems.com).