

Kreatech™ FISH probes

Product Information Sheet

KI-10710

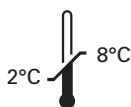
CDKN2A (9p21) / 9q21 (tissue)

100 µl

DANGER



FORMAMIDE



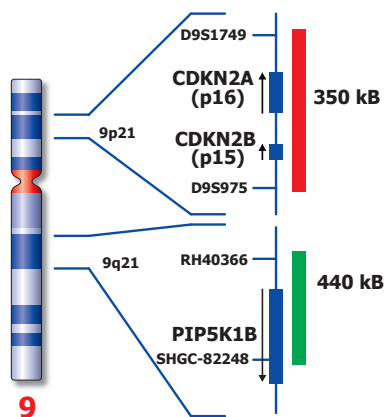
Kreatech Biotechnology B.V.
Vlierweg 20
1032 LG Amsterdam
The Netherlands
www.LeicaBiosystems.com

RUO - Research Use Only

Not for use in diagnostic procedures

PI-KI-10710_D2.1

Published Oct 2015



Not to scale

KI-10710

Kreatech™ CDKN2A (9p21) / 9q21 (tissue) FISH probe

Introduction: The **CDKN2A (9p21)** specific FISH probe is optimized to detect the CDKN2A (INK4A) gene region at region 9p21. The **9q21** specific region FISH probe is included to facilitate chromosome identification.

The probe is especially developed for use on paraffin sections.

Critical region 1 (red): The **CDKN2A (9p21)** specific FISH probe is direct-labeled with PlatinumBright™550.
Control region (green): The **9q21** FISH probe gene region is direct-labeled with PlatinumBright™495.

Reagent: Kreatech probes are direct-labeled DNA probes provided in a ready-to-use format. Apply 10 µl of probe to a sample area of approximately 22 x 22 mm.

Please refer to the Instructions for Use for the entire Kreatech FISH protocol.

Kreatech FISH probes are REPEAT-FREE™ and therefore do not contain Cot-1 DNA. Hybridization efficiency is increased and background, due to unspecific binding, is highly reduced.

Patterns: The **CDKN2A (9p21) / 9q21 (tissue)** FISH probe is designed as a dual-color assay to detect deletions at 9p21. Deletions involving the CDKN2A gene region at 9p21 will show one red signal, while the control at the chromosome 9q12 region will provide 2 green signals in hemizygous deletions. No red signal, but 2 green signals for 9q12 will be visible in homozygous deletions of 9p21.

Two single color red (R) and green (G) signals will identify the normal chromosomes 9 (2R2G).

	Normal Signal Pattern	Del(9p21)
Expected Signals	2R2G	0-1R2G

References: Dreyling et al, 1995, Blood, 86: 1931-1938.
Southgate et al, 1995, Br J Cancer, 72: 1214-1218.

Warning and precautions: In case of emergencies check SDS sheets for medical advice. SDS sheets may be obtained by either contacting Leica Technical Support or visiting www.LeicaBiosystems.com. DNA probes contain formaldehyde which is a teratogen; do not inhale or allow skin contact. Wear gloves and a lab coat when handling DNA probes. All materials should be disposed of according to your institution's guidelines for hospital waste disposal.

Reagent Storage and Handling: Store at 2-8 °C. Reagents should not be used after the expiration date on the vial label.

TECHNICAL SUPPORT Technical support is available at www.LeicaBiosystems.com/service-support/technical-support/ or toll free at 800-248-0123 or via e-mail: kreatech-support@leicabiosystems.com.

CUSTOMER SERVICE Kreatech probes may be ordered through Leica Customer Service toll free at 800-248-0123 or order via e-mail: purchase.orders@leica-microsystems.com.