

# Kreatech™ FISH probes

## Product Information Sheet

KI-10706

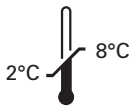
MYCN (2p24) / AFF3 (2q11)

100 µl

**DANGER**



**FORMAMIDE**



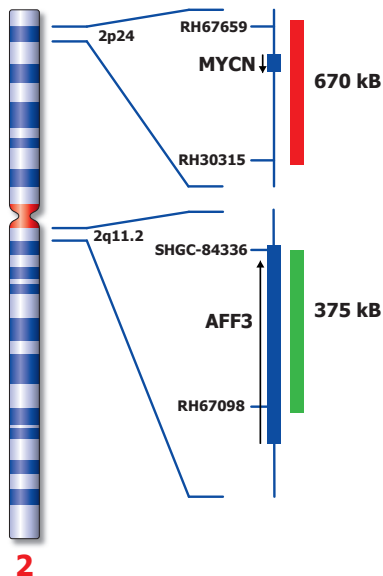
**Kreatech Biotechnology B.V.**  
Vlierweg 20  
1032 LG Amsterdam  
The Netherlands  
[www.LeicaBiosystems.com](http://www.LeicaBiosystems.com)

**RUO - Research Use Only**

Not for use in diagnostic procedures

PI-KI-10706\_D2.1

Published Oct 2015



Not to scale

KI-10706

## Kreatech™ MYCN (2p24) / AFF3 (2q11) FISH probe

**Introduction:** The **MYCN (2p24)** specific FISH probe is optimized to detect the MYCN gene region at region 2p24. The **AFF3** gene region FISH probe at 2q11 is included to facilitate chromosome identification.

**Critical region 1 (red):** The **MYCN (2p24)** specific FISH probe is direct-labeled with PlatinumBright™550  
**Control region (green):** The **AFF3 (2q11)** FISH probe is direct-labeled with PlatinumBright™495.

**Reagent:** Kreatech probes are direct-labeled DNA probes provided in a ready-to-use format. Apply 10 µl of probe to a sample area of approximately 22 x 22 mm.

**Please refer to the Instructions for Use for the entire Kreatech FISH protocol.**

**Kreatech FISH probes are REPEAT-FREE™ and therefore do not contain Cot-1 DNA. Hybridization efficiency is increased and background, due to unspecific binding, is highly reduced.**

**Patterns:** The **MYCN (2p24) / AFF3 (2q11)** FISH probe is designed as a dual-color assay to detect amplification at 2p24. Amplification involving the MYCN gene region at 2p24 will show several red signals, while the control at the AFF3 (2q11) region will provide 2 signals. Signals often appear as homogenously staining region or double minutes containing numerous MYCN signals.

	Normal Signal Pattern	Amp(2p24)
Expected Signals	2R2G	3+R2G

**References:** Ambros P et al, 2001, Med Pediatr Oncol, 36; 1-4  
INRG, preliminary report, ANC 2006

**Warning and precautions:** In case of emergencies check SDS sheets for medical advice. SDS sheets may be obtained by either contacting Leica Technical Support or visiting [www.LeicaBiosystems.com](http://www.LeicaBiosystems.com). DNA probes contain formamide which is a teratogen; do not inhale or allow skin contact. Wear gloves and a lab coat when handling DNA probes. All materials should be disposed of according to your institution's guidelines for hospital waste disposal.

**Reagent Storage and Handling:** Store at 2-8 °C. Reagents should not be used after the expiration date on the vial label.

**TECHNICAL SUPPORT** Technical support is available at [www.LeicaBiosystems.com/service-support/technical-support/](http://www.LeicaBiosystems.com/service-support/technical-support/) or toll free at 800-248-0123 or via e-mail: [kreatech-support@leicabiosystems.com](mailto:kreatech-support@leicabiosystems.com).

**CUSTOMER SERVICE** Kreatech probes may be ordered through Leica Customer Service toll free at 800-248-0123 or order via e-mail: [purchase.orders@leica-microsystems.com](mailto:purchase.orders@leica-microsystems.com).