

Kreatech™ FISH probes

Product Information Sheet

KI-40118

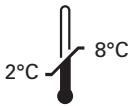
GATA4 (8p23) / SE 8

100 µl

DANGER



FORMAMIDE



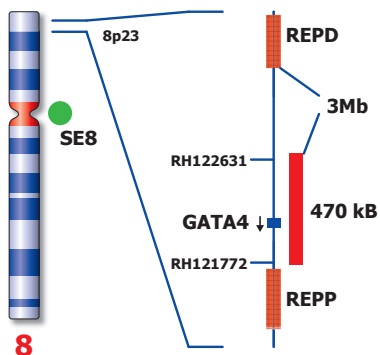
Kreatech Biotechnology B.V.
Vlierweg 20
1032 LG Amsterdam
The Netherlands
www.LeicaBiosystems.com

RUO - Research Use Only

Not for use in diagnostic procedures

PI-KI-40118_D2.1

Published Oct 2015



Not to scale

KI-40118

Kreatech™ GATA4 (8p23) / SE 8 FISH probe

Introduction: The **GATA4 (8p23)** FISH probe is optimized to detect deletions of the GATA4 gene region at 8p23 in a dual color assay. The **Satellite Enumeration (SE) 8** FISH probe is included to facilitate chromosome identification.

Critical region 1 (red): The **GATA4 (8p23)** gene region probe is direct-labeled with PlatinumBright™550.
Critical region 2 (green): The **SE 8** FISH probe is direct-labeled with PlatinumBright™495.

Reagent: Kreatech probes are direct-labeled DNA probes provided in a ready-to-use format. Apply 10 µl of probe to a sample area of approximately 22 x 22 mm.

Please refer to the Instructions for Use for the entire Kreatech FISH protocol.

Kreatech FISH probes are REPEAT-FREE™ and therefore do not contain Cot-1 DNA. Hybridization efficiency is increased and background, due to unspecific binding, is highly reduced.

Patterns: The **GATA4 (8p23) / SE 8** FISH probe is designed as a dual color probe to detect deletions of the GATA4 gene region on chromosome 8p23. Deletion of the GATA4 region at 8p23 will show a single red signal while the control will show 2 green signals (1R2G). Duplication involving the GATA4 region will show 3 red signals and 2 green signals (3R2G). Two single color red and green signals (2R2G) will identify the normal chromosomes 8.

	Normal Signal Pattern	Deletion involving GATA4 region	Duplication involving GATA4 region
Expected Signals	2R2G	1R2G	3R2G

References: Bhatia et al, 1999, Prenat Diagn, 19, 863-867
Giorda et al, 2007, Hum Mut, 28, 459-468
Wat et al, 2009, Am J Med Genet Part A, 149A, 1661-1677

Warning and precautions: In case of emergencies check SDS sheets for medical advice. SDS sheets may be obtained by either contacting Leica Technical Support or visiting www.LeicaBiosystems.com. DNA probes contain formamide which is a teratogen; do not inhale or allow skin contact. Wear gloves and a lab coat when handling DNA probes. All materials should be disposed of according to your institution's guidelines for hospital waste disposal.

Reagent Storage and Handling: Store at 2-8 °C. Reagents should not be used after the expiration date on the vial label.

TECHNICAL SUPPORT Technical support is available at www.LeicaBiosystems.com/service-support/technical-support/ or toll free at 800-248-0123 or via e-mail: kreatech-support@leicabiosystems.com.

CUSTOMER SERVICE Kreatech probes may be ordered through Leica Customer Service toll free at 800-248-0123 or order via e-mail: purchase.orders@leica-microsystems.com.