

Kreatech™ FISH probes

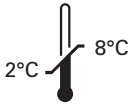
Product Information Sheet

KI-10757
FGFR2 (10q26) / SE 10
100 µl

DANGER



FORMAMIDE



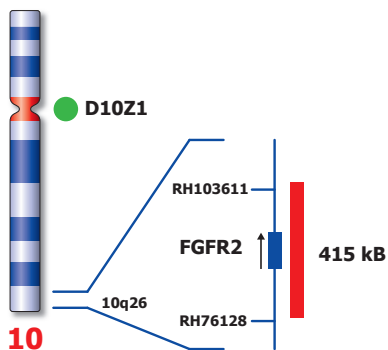
Kreatech Biotechnology B.V.
Vlierweg 20
1032 LG Amsterdam
The Netherlands
www.LeicaBiosystems.com

RUO - Research Use Only

Not for use in diagnostic procedures

PI-KI-10757_D2.1

Published Oct 2015



Not to scale

KI-10757

Kreatech™ FGFR2 (10q26) / SE 10 FISH probe

Introduction: The **FGFR2 (10q26)** FISH probe is optimized to detect amplification involving the FGFR2 gene region at 10q26 in a dual-color assay on paraffin embedded tissue sections. The FGFR2 (10q26) specific FISH probe is optimized to detect copy numbers of the FGFR2 gene region at region 10q26. The **Satellite Enumeration (SE) 10** FISH probe is included to facilitate chromosome identification.

Critical region 1 (red): The **FGFR2 (10q26)** gene region probe is direct-labeled with PlatinumBright™550.
Control region (green): The **SE 10** FISH probe is direct-labeled with PlatinumBright™495.

Reagent: Kreatech probes are direct-labeled DNA probes provided in a ready-to-use format. Apply 10 µl of probe to a sample area of approximately 22 x 22 mm.

Please refer to the Instructions for Use for the entire Kreatech FISH protocol.

Kreatech FISH probes are REPEAT-FREE™ and therefore do not contain Cot-1 DNA. Hybridization efficiency is increased and background, due to unspecific binding, is highly reduced.

Pattern: The **FGFR2 (10q26) / SE 10** FISH probe is designed as a dual-color assay to detect amplification at 10q26. Amplification involving the FGFR2 gene region at 10q26 will show several red signals, while the control at chromosome 10 centromere will show 2 green signals (3+R2G). Two single color red and green signals will identify the normal chromosomes 10 (2R2G).

	Normal Signal Pattern	10q26 Amplification
Expected signals	2R2G	3+R2G

Warning and precautions: In case of emergencies check SDS sheets for medical advice. SDS sheets may be obtained by either contacting Leica Technical Support or visiting www.LeicaBiosystems.com. DNA probes contain formaldehyde which is a teratogen; do not inhale or allow skin contact. Wear gloves and a lab coat when handling DNA probes. All materials should be disposed of according to your institution's guidelines for hospital waste disposal.

Reagent Storage and Handling: Store at 2-8 °C. Reagents should not be used after the expiration date on the vial label.

TECHNICAL SUPPORT Technical support is available at www.LeicaBiosystems.com/service-support/technical-support/ or toll free at 800-248-0123 or via e-mail: kreatech-support@leicabiosystems.com.

CUSTOMER SERVICE Kreatech probes may be ordered through Leica Customer Service toll free at 800-248-0123 or order via e-mail: purchase.orders@leica-microsystems.com.