

Kreatech™ FISH probes

Product Information Sheet

KI-40107

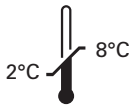
WHSC1 (4p16) / SE 4

100 µl

DANGER



FORMAMIDE



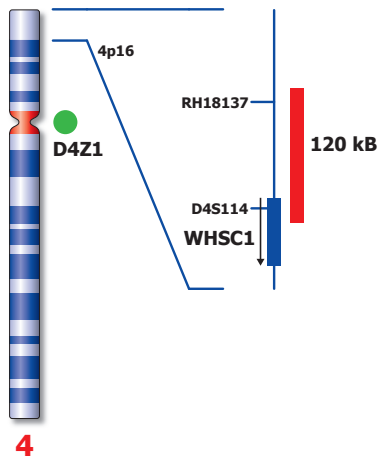
Kreatech Biotechnology B.V.
Vlierweg 20
1032 LG Amsterdam
The Netherlands
www.LeicaBiosystems.com

RUO - Research Use Only

Not for use in diagnostic procedures

PI-KI-40107_D2.1

Published Sept 2015



Not to scale

KI-40107

Kreatech™ WHSC1 (4p16) / SE 4 FISH probe

Introduction: The **WHSC1 (4p16)** region probe is optimized to detect the Wolf-Hirschhorn WHSC1 (MMSET, NSD2) critical region at 4p16. The **Satellite Enumeration (SE) 4** FISH probe is included to facilitate chromosome identification.

Critical region 1 (red): The **WHSC1 (4p16)** specific FISH probe is direct-labeled with PlatinumBright™550.
Control region (green): The **SE 4** FISH probe is direct-labeled with PlatinumBright™495.

Reagent: Kreatech probes are direct-labeled DNA probes provided in a ready-to-use format. Apply 10 µl of probe to a sample area of approximately 22 x 22 mm.

Please refer to the Instructions for Use for the entire Kreatech FISH protocol.

Kreatech FISH probes are REPEAT-FREE™ and therefore do not contain Cot-1 DNA. Hybridization efficiency is increased and background, due to unspecific binding, is highly reduced.

Patterns: The **WHSC1 (4p16) / SE 4** FISH probe is designed as a dual-color assay to detect deletions at 4p16. Deletions involving the WHSC1 region will show one red signal and two green signals at the chromosome 4 centromere control region (1R2G). Two single color red and green signals will identify the normal chromosomes 4 (2R2G).

	Normal Signal Pattern	Del(4p16)
Expected Signals	2R2G	1R2G

References: Wright T et al, 1997, Hum Mol Genet; 6(2); 317-24
Zollino et al, 2003, Am J Hum Genet. March; 72(3); 590–597

Warning and precautions: In case of emergencies check SDS sheets for medical advice. SDS sheets may be obtained by either contacting Leica Technical Support or visiting www.LeicaBiosystems.com. DNA probes contain formamide which is a teratogen; do not inhale or allow skin contact. Wear gloves and a lab coat when handling DNA probes. All materials should be disposed of according to your institution's guidelines for hospital waste disposal.

Reagent Storage and Handling: Store at 2-8 °C. Reagents should not be used after the expiration date on the vial label.

TECHNICAL SUPPORT Technical support is available at www.LeicaBiosystems.com/service-support/technical-support/ or toll free at 800-248-0123 or via e-mail: kreatech-support@leicabiosystems.com.

CUSTOMER SERVICE Kreatech probes may be ordered through Leica Customer Service toll free at 800-248-0123 or order via e-mail: purchase.orders@leica-microsystems.com.