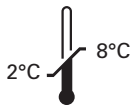


Kreatech™ FISH probes

Product Information Sheet

KBI-10757

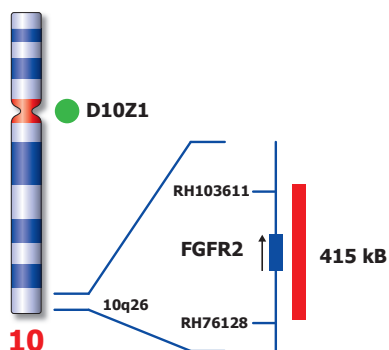
FGFR2 (10q26) / SE 10



Kreatech Biotechnology B.V.
Vierweg 20
1032 LG Amsterdam
The Netherlands
www.LeicaBiosystems.com

PI-KBI-10757_D1.1

Published March 2015



Not to scale

Kreatech™ FGFR2 (10q26) / SE 10 FISH probe

Intended use: The **FGFR2 (10q26) / SE 10** FISH probe is optimized to detect amplification involving the FGFR2 gene region at 10q26 in a dual-color assay on formalin-fixed paraffin-embedded tissue sections. The FGFR2 (10q26) specific FISH probe is optimized to detect copy numbers of the FGFR2 gene region at region 10q26. The **Satellite Enumeration (SE) 10** FISH probe is included to facilitate chromosome identification.

The probe is recommended to be used in combination with one of the Kreatech Pretreatment kits providing necessary reagents to perform FISH on various sample types for optimal results. (see also www.LeicaBiosystems.com and look for Kits & reagents)

Critical region 1 (red): The **FGFR2 (10q26)** gene region probe is direct-labeled with PlatinumBright™550.
Control region 2 (green): The **SE 10** FISH probe is direct-labeled with PlatinumBright™495.

Reagent: Kreatech probes are direct-labeled DNA probes provided in a ready-to-use format. Apply 10 µl of probe to a sample area of approximately 22 x 22 mm.

Please refer to the Instructions for Use for the entire Kreatech FISH protocol.

Kreatech FISH probes are REPEAT-FREE™ and therefore do not contain Cot-1 DNA. Hybridization efficiency is increased and background, due to unspecific binding, is highly reduced.

Interpretation: The **FGFR2 (10q26) / SE 10** FISH probe is designed as a dual-color assay to detect amplification at 10q26. Amplification involving the FGFR2 gene region at 10q26 will show several red signals, while the control at chromosome 10 centromere will show 2 green signals (3+R2G). Two single color red and green signals will identify the normal chromosomes 10 (2R2G).

	Normal Signal Pattern	10q26 Amplification
Expected signals	2R2G	3+R2G

Warning and precautions: In case of emergencies check SDS sheets for medical advice. SDS sheets may be obtained by either contacting Leica Technical Support or visiting www.LeicaBiosystems.com. DNA probes contain formamide which is a teratogen; do not inhale or allow skin contact. Wear gloves and a lab coat when handling DNA probes. All materials should be disposed of according to your institution's guidelines for hospital waste disposal.

Reagent Storage and Handling: Store at 2-8 °C. Reagents should not be used after the expiration date on the vial label.

TECHNICAL SUPPORT Technical support is available at www.LeicaBiosystems.com or +31 20 6919181 or via e-mail: kreatech-support@leicabiosystems.com.

CUSTOMER SERVICE Kreatech probes may be ordered through Leica Customer Service +31 20 6919181 or order via e-mail: purchase.orders@leica-microsystems.com.