

Kreatech™ FISH probes

Product Information Sheet

KI-10725

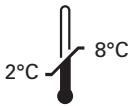
CDK4 (12q13) / SE 12

100 µl

DANGER



FORMAMIDE



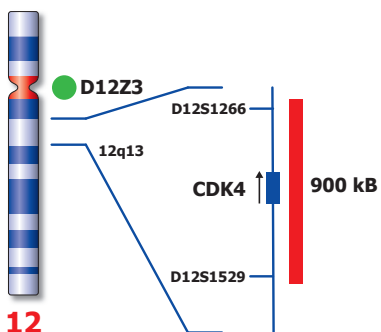
Kreatech Biotechnology B.V.
Vlierweg 20
1032 LG Amsterdam
The Netherlands
www.LeicaBiosystems.com

RUO - Research Use Only

Not for use in diagnostic procedures

PI-KI-10725_D2.1

Published Oct 2015



Not to scale

KI-10725

Kreatech™ CDK4 (12q13) / SE 12 FISH probe

Introduction: The **CDK4 (12q13)** specific FISH probe is optimized to detect the CDK4 gene region at region 12q13. The **Satellite Enumeration (SE) 12** FISH probe is included to facilitate chromosome identification.

Critical region 1 (red): The **CDK4 (12q13)** gene region probe is direct-labeled with PlatinumBright™550.
Control region (green): The **SE 12** FISH probe is direct-labeled with PlatinumBright™495.

Reagent: Kreatech probes are direct-labeled DNA probes provided in a ready-to-use format. Apply 10 µl of probe to a sample area of approximately 22 x 22 mm.

Please refer to the Instructions for Use for the entire Kreatech FISH protocol.

Kreatech FISH probes are REPEAT-FREE™ and therefore do not contain Cot-1 DNA. Hybridization efficiency is increased and background, due to unspecific binding, is highly reduced.

Patterns: The **CDK4 (12q13) / SE 12** FISH probe is designed as a dual-color assay to detect amplifications at 12q13. Amplifications involving the CDK4 gene region at 12q13 will show several red signals, while the control at the chromosome 12 centromere region will provide 2 signals. Two single color red (R) and green (G) signals will identify the normal chromosomes 12 (2R2G).

	Normal Signal Pattern	12q13 Amplification
Expected Signals	2R2G	3+R2G

References: Shimada et al, 2006, Hum Path 37(9) ; 1123-1129

Warning and precautions: In case of emergencies check SDS sheets for medical advice. SDS sheets may be obtained by either contacting Leica Technical Support or visiting www.LeicaBiosystems.com. DNA probes contain formamide which is a teratogen; do not inhale or allow skin contact. Wear gloves and a lab coat when handling DNA probes. All materials should be disposed of according to your institution's guidelines for hospital waste disposal.

Reagent Storage and Handling: Store at 2-8 °C. Reagents should not be used after the expiration date on the vial label.

TECHNICAL SUPPORT Technical support is available at www.LeicaBiosystems.com/service-support/technical-support/ or toll free at 800-248-0123 or via e-mail: kreatech-support@leicabiosystems.com.

CUSTOMER SERVICE Kreatech probes may be ordered through Leica Customer Service toll free at 800-248-0123 or order via e-mail: purchase.orders@leica-microsystems.com.